

The intersectionality of gender, sexual identity, and disability in Disaster Risk Reduction in OECD countries: A rapid scoping review

Authors:

Crawford, T., Chang, K-Y. J., Nila, F., Subramaniam, P., Villeneuve, M.

Abstract

People with disability are disproportionately affected by disasters due to layers of marginalisation from an interaction of personal, social, economic, political and environmental factors. These intersect with gender, gender identity and sexual orientation, and result in additional discrimination and social exclusion that reinforce inequality and stigma. There has been little focus on the intersection of disability and gender in Disability Inclusive Disaster Risk Reduction (DIDRR) in high-income countries such as Australia. This paper reports on a scoping review exploring the intersection of gender and sexual identity and disability in disaster in both peer-reviewed and grey literature. Building greater awareness of the specific needs of minority groups such as women, gender and sexually diverse people into DIDRR will reduce the disproportionate impacts of disaster on these groups.

Keywords

Disability, gender, sexual identity, disaster risk reduction

Introduction

People with disability make up 15% of the world's population (World Health Organisation and The World Bank, 2011), and are disproportionately affected by disasters due to layers of marginalisation (Erman et al., 2021; Kelman & Stough 2015, Le Masson, 2016; Levac et al. 2012). There is an expanding body of research exploring how to reduce this impact by

facilitating mainstream agencies to include people with disability in disaster risk reduction (Villeneuve, Dominey-Howes, Llewellyn, 2017; Villeneuve, 2018; Villeneuve, 2022). This is a challenge as people with disability are a heterogeneous group; who experience barriers in diverse ways due to long-term physical, mental, intellectual, and sensory impairments (World Bank Group, 2018). Disaster vulnerabilities result from an interaction of personal and social, economic, political and environmental factors. These intersect with gender and gender identity, sexual orientation, age, race, culture, and religion, and result in additional discrimination and social exclusion (Mowat, 2015; World Bank, 2018).

Gartrell et al. (2020) found there are additional and unequal impacts of disasters on women with disability compared to other people with disability. These include higher fatality rates, greater risk of sexual and gender-based violence (SGBV), impacts from culturally defined gender roles (i.e. caretaking roles that lead to being stranded at home during a disaster, with less mobility after disaster), having less financial independence and lower physical fitness to enable various forms of escape. For other marginalised groups such as lesbian, gay, trans, queer and other sexually or gender diverse (LGBTQ+) people, disasters can result in further exclusion or marginalisation. For example, government policies and non-government organisation (NGO) practices can lead to a loss of personal and communal spaces that expose them to verbal and physical abuse and stigmatisation (Dominey-Howes, Gorman-Murray & McKinnon, 2016). Kolkawski-Hayner and Goldin (2020) argue that women and LGBTQ+ individuals with disability such as acquired brain injury are more likely to be negatively impacted in a disaster, including COVID-19, due to violence, lack of family support and community resources, higher rates of poverty and social isolation. This leads to more symptoms of depression, anxiety, fatigue and sleep disturbance as the intersection of other bases of discrimination such as gender and sexual identity often reinforce inequality, stigma and social expectations (Erman et al. 2021).

While programmes to support disability inclusive disaster risk reduction (DIDRR) have been developing (Villeneuve, 2021), there has been little focus on the intersection of disability and gender in DIDRR in high-income countries such as Australia. This paper reports on a scoping review exploring the intersection of gender and sexual identity and disability in disaster in both peer-reviewed and grey literature. More specifically, we wanted to identify the *key challenges* faced by people with disability who are women, men, gender and sexually diverse before, during and after disasters, and the identified *recommended strategies* for the inclusion in disaster risk reduction (DRR).

Review process/methods

Scoping review was the chosen method to describe the extent, range and characteristics of literature as it addresses a specific topic or field of study in order to summarise the findings from a diverse body of knowledge, and to aid in planning interventions or future research (Tricco et al., 2018). Human research ethics approval was not required as there was no collection of primary data.

Review Questions and Inclusion Criteria

During the pre-planning phase, a study protocol was developed following the PRISMA-ScR reporting guidelines (PRISMA, 2023) and the JBI Methodological Guidelines (Garritty et al., 2020) for conducting a scoping review. The protocol was formulated to address the following questions:

1. What is known about the intersectionality of gender, sexual identity, and disability in disaster?
2. What are the key challenges faced by people with disability who are women, men, gender and sexually diverse before, during, and after disasters?

3. What are the identified enablers/recommended strategies (from whose perspective) for the inclusion of this cohort in disaster risk reduction?

The scoping review employed broad criteria of Participants, Concept, and Context (PCC) to enable the inclusion of a wide range of evidence and knowledge. Participants included people with disability who are women, men, gender and sexually diverse. The core concept examined in this scoping review is the intersectionality of disability and gender, disability and sexual identity, and disaster. The context of this review is OECD countries.

Evidence Sources and Search Strategies

The sources of evidence and knowledge included peer-reviewed empirical studies (such as experimental studies, observational studies and cross-sectional studies), and grey literature (such as discussion papers, book chapters, and policy papers.) The search for peer-reviewed empirical studies was conducted in Medline, PsycINFO, Embase, CINAHL, Scopus, ProQuest, and Web of Science. The search for grey literature was conducted in international databases and websites that index resources from international organizations, including PreventionWeb, AskSource, DIDRRN, ReliefWeb, Natural Hazards Center, GOV.UK, Australian Institute for Disaster Resilience (AIDR), and Disability Advocacy Resource Unit (DARU). Both qualitative and quantitative data published in English since 2010 were included. While the criteria is for empirical studies in OECD countries, the criteria for grey literature was from the global perspective given the nature of the literature and smaller numbers that were relevant to the review.

Table 1 presents the search strings developed in consultation with a librarian. A complete search strategy for empirical studies in Medline is included as Supplementary Material I.

Concept	Search strings
1. Gender	(exp gender identity/) or (gender* or sex* or boy* or girl* or women* or men* or male* or female* or gender identity* or Non-binary or Transgender or Trans or Queer or Gender diverse* or Gender minority* or "same sex" or intersex*).tw.
2. Sexual identity	(Sexual identity* or Heterosexual or Homosexual or Bisexual or Pansexual or Asexual or LGBTQIA or LGBTQi or LGBT or Gay or Lesbian).tw.
3. Disability	exp disabled persons/ OR (disab* or handicap* or disabled Person* or mental retard* or development* disability* or learning disorder* or cognitive* or hearing impair* or hearing loss* or hearing disorder* or Intellectual Disabilit* or intellectual disorder* or Cri-du-Chat Syndrome* or down syndrome* or de lange syndrome* or Mental retardation* or Rubinstein Taybi syndrome* or trisomy 13 syndrome* or WAGR syndrome* or Williams Syndrome* or Prader Willi syndrome* or genetic disorder* or Vision disorder* or vision impair* or blind* or low vision* or visual disorder* or language development disorder* or speech disorder* or communication disorder* or communication disabilt* or mutism or deaf* or sign language or Auslan or auditory processing disorder* or speech delay* or language delay* or semantic pragmatic disorder* or Brain Injur* or autism* or autisite* or kanner* syndrome* or Chronic brain damage* or Cerebral Palsy or neurodiverse* or Spinal dysraphism or Spina

	<p>bifida* or Mental disorder* or psych* disorder* or psych* disab* or motor disorder* or neuro cognitive disorder* or neurodevelopment disorder* or bipolar disorder* or substance related disorder*).tw.</p>
<p>4. Disaster preparedness, response or recovery</p>	<p>exp Disasters/ OR exp Natural Disasters/ OR exp Weather/ OR landslides/ OR tsunamis/ OR volcanic eruptions/ OR Pandemics/ OR "natural hazard*" OR (natural disaster* OR avalanche* OR cyclonic storm* OR drought* OR earthquake* OR flood* OR landslide* OR tidal wave* OR tornado* OR wildfire* OR weather* OR extreme heat* OR Extreme weather* OR lightning OR rain* OR temperature* OR wind* OR landslide* OR tsunami* OR "chemical spill*" OR "Oil spill*" OR "House fire" OR "volcanic eruption*" OR Pandemic* OR Disease Outbreak*).mp OR (Disaster* OR disaster emergenc* OR "disaster management" OR "disaster response" OR "disaster recovery" OR "emergency preparedness" OR "emergency management" OR "strategic stockpile" OR "relief work" OR "Disaster Planning" OR "disaster plan" OR "inclusive preparedness" OR "inclusive emergency management" OR "disability inclusive disaster risk reduction" OR "disaster risk education" OR "DIDRR" OR "DRR" OR "EPRR").tw.</p>

Table 1. Search strings

Screening and Study Selection

After removing duplicates, the empirical studies and grey literature retrieved from the search in the aforementioned databases and websites were imported into Covidence software for screening. Following the screening methods outlined in the Cochrane Rapid Reviews Guide (2020), two reviewers (FN & PS) conducted dual screening of 20% of peer-reviewed abstracts, with conflicts resolved by a third reviewer (KJC). FN then screened the remaining 80% abstracts, and PS screened all excluded abstracts, with conflicts resolved by KJC. FN and PS conducted further screening of full-text records and PS. PS individually screened all grey literature. All reviewers (FN, PS & KJC) agreed on the final inclusion of empirical studies and grey literature. Additionally, the reference lists of the studies included in the full-text screen were searched for additional sources.

Data Extraction

Data extraction followed the Cochrane Rapid Reviews guidance. The first reviewer (FN for empirical studies and PS for grey literature) extracted data using a charting framework consisting of elements such as study information, methods, study focus, and key findings (see Table 1 heading row for details). The second reviewer (PS for empirical studies and FN for grey literature) checked for the correctness and completeness of the extracted data. Any conflicts or differences in opinions, such as whether a study or report met the criteria, were resolved through discussion among the three reviewers (FN, PS, and KJC).

Results

Our search strategy identified 2,631 sources (peer-reviewed n=2106, grey literature n=525). Duplicates (n=961) were removed and the titles and abstracts of remaining sources were screened for eligibility (peer-reviewed n=1145, grey literature n=525) with a significant number excluded (peer-reviewed n=1137, grey literature n=498), due to not meeting inclusion

criteria (for example, not addressing the intersectionality of disability and gender, or disability and sexual identity). Full text review resulted in five peer-reviewed and nine grey literature that were synthesized in this review (see Figure 2).

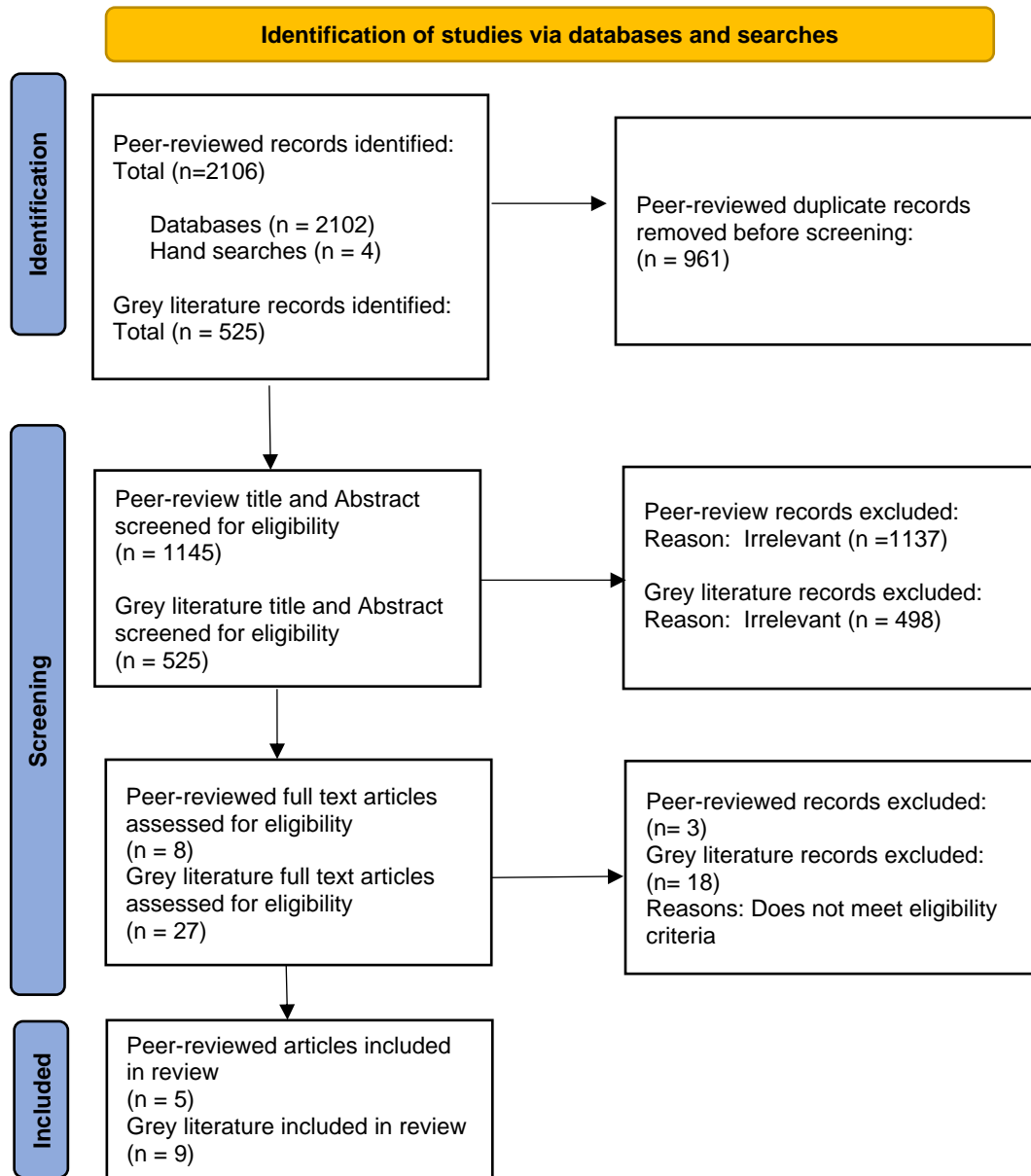


Figure 2: PRISMA flow diagram of search and screening process.

An overview of the 14 sources used in this review are provided in Table 2, and the findings, challenges and recommendations are detailed in the Discussion below. The intersection of gender, sexuality and disability in the context of disaster is not commonly reported. All five of the empirical studies that explored this intersection were conducted with the COVID-19 as the

disaster context, demonstrating a large gap in research exploring disability, gender and sexual identity in the context of natural hazards. Three of the five used qualitative methods of focus groups and interviews, and two used surveys. Each study had a very specific focus and inclusion criteria. For example, women with disability and access to sexual and reproductive health services (Gul & Yagmur, 2022), boys with Autism Spectrum Disorder (ASD) (Hannawi et al., 2022), men with learning disabilities (Moloney et al., 2021), girls with Fragile X syndrome (Jordan et al. 2022), and LGBTQ+ people with intellectual and developmental disabilities (Platero et al., 2023). The grey literature that met the criteria included policy briefs and reports, predominately from the United Nations and the World Bank, that focused more broadly on disability inclusive disaster risk reduction in a variety of disasters, with two focusing specifically on the COVID-19 context.

Author, date & country of origin	Study title	Study design/type	Journal/ Source location	Aims of research	Key findings
Gul, Sidar & Yagmur, Yurdagul. 2022, Turkey	The Access of Women with Disabilities to Reproductive Health Services During the COVID-19 Pandemic: A Qualitative Study	Qualitative	International journal of caring sciences	To determine the access of women with disabilities to reproductive health services during the COVID-19 pandemic.	Challenges: Fear of COVID-19 infection, barriers accessing sexual and reproductive health services, communication difficulties, lack of family & social support. Recommendations: Nurses should take a role in the development of policies and efforts to ensure continuity in SRH services for women with disabilities.
Hannawi, Andrew P., Knight, Caitlin, Grelotti, David J., Trauner, Doris, A. 2022, USA	Impact of COVID-19 pandemic-associated social changes on boys with moderate to severe autism	Quantitative	Advances in Neurodevelopmental Disorders	To assess the effect of the COVID-19 Pandemic and resulting social changes on boys with autism spectrum disorder.	Challenges: Loss of services/therapies, difficulty adjusting to changes impacting on behaviour, challenges with online learning, no social interaction.
Jordan, Tracey L., Bartholomay, Kristi L., Lee, Cindy H-Y.,	COVID-19 Pandemic: Mental Health in Girls With	Quantitative	Journal of Paediatric Psychology	To examine the mental health impacts of the COVID-19 pandemic among	Challenges: Difficulty adjusting to changes and online learning increased anxiety, lack of social interaction.

Miller, Jonas, G., Lightbody, Amy, A., & Reiss, Allan, L. 2022, USA	and Without Fragile X Syndrome			school-aged girls with FXS.	Recommendations: Learn new skills using technology, encourage coping skills and independence with a consistent daily routine.
Molony, Paul, Dobel-Ober, David, Millichap, S. 2022, UK	Sound and Vision: Reflections on running a community-based group for men with learning disabilities online, during the pandemic	Qualitative/ reflection	British journal of learning disabilities	To assist the men with learning disabilities to create new friendships and to cope with or recover from mental health problems via the sharing of interests and concerns, and to press for more helpful local services and inclusive communities.	Challenges: Reluctance to use technology, unstable internet connection/inadequate financial support, lack of services/therapies. Recommendations: Benefits of technology for virtual gatherings and sharing of resources, referral for speech and language assessment.
Platero, R Lucas & López-Sáez, Miguel Ángel. 2023, Spain	Community responses to LGBT+ adults with intellectual and developmental disabilities during the COVID-19 confinement in Madrid	Qualitative	International social work	To explore the experiences of a group of LGBT+ people with in Madrid coping with the first wave of the COVID-19 pandemic (March–May 2020).	Challenges: Increased control by others, barriers to sexual rights, fear of discrimination and increased anxiety. Lack of awareness re disability and LGBTQ+ community. Recommendations: Strategies to overcome anxiety use of online support programmes.
United Nations, 2020	Policy Brief: A Disability-Inclusive Response to COVID-19	Policy brief: Reference to intersectionality including gender, women & girls in particular pp. 6- 8, 15.	DIDRRN	This Policy Brief highlights the impact of COVID19 on persons with disabilities and in doing so, outlines key actions and recommendations to make the response and recovery inclusive of persons with disabilities. While the brief contains specific recommendations focusing on key sectors, it identifies four	Challenges: Persons with disabilities experiencing intersectional and multiple discrimination will carry a heavier burden of the economic and social consequences of the pandemic. Recommendations: A combination of mainstream and disability-specific measures are necessary to ensure systematic inclusion of persons with disabilities. Ensure accessibility of information, facilities, services and programmes in the COVID-19 response and recovery. Ensure meaningful consultation with and active participation of persons with disabilities and

				overarching areas of action that are applicable for all.	their representative organizations in all stages of the COVID-19 response and recovery as well as accountability measures.
United Nations, 2018	Realization of the sustainable development goals by, for and with persons with disability: UN Flagship Report on Disability and Development	Report: Section E relates to gender pp. 124-150	DIDRRN	This report represents the first UN system wide effort to examine disability and the Sustainable Development Goals (SDGs) of the 2030 Agenda. The report reviews data, policies and programmes and identifies good practices; and uses the evidence it reviewed to outline recommended actions to promote the realization of the SDGs for persons with disabilities.	Challenges: Persons with disabilities, particularly women, children and older persons with disabilities, are also be more vulnerable to exploitation, violence, physical, sexual and emotional abuse in the aftermath humanitarian crises, particularly refugees with disabilities; experience multiple and intersecting forms of discrimination. Recommendations: persons with disabilities, including women and children with disabilities, participate in decision-making processes and are active stakeholders at all stages of disaster response and humanitarian action, rebuilding, and inclusion in operational standards, information is in accessible formats. Awareness raising and capacity building of issues relating to marginalised groups.
World Bank Group - Global Facility for Disaster Reduction and Recovery (GFDRR), 2018	Five Actions for Disability-Inclusive Disaster Risk Management	Policy brief: Action 4 refers to needs of women p. 13.	DIDRRN	Literature survey to identify actions relating to improving disability inclusive disaster risk management.	Challenges: women with disability face higher barriers during disasters, and are at greater risk of gender-based violence. Recommendations: Collect data that is inclusive of persons with disabilities.
Zurich Flood Resilience Alliance, 2022	Inclusion and disaster resilience Insights for gender and disability inclusive disaster-resilience building	Resource/ brief report: Reference to disability & gender throughout report.	AIDR	To provide practical guidance for using the Zurich Flood Resilience Measurement for Communities (FRMC) to understand gender and disability dynamics and account for them in flood resilience-	Challenges: women and people with disabilities have difficulty accessing health care, lack of access to communication and resources. Recommendations: Inclusion-informed data collection using the Flood Resilience Measurement for Communities (FRMC) developed by the Zurich considers the roles, responsibilities, needs, and safety of all participants, understanding that these factors will be different due to intersecting identities and lived

				building interventions.	experiences. This includes accommodating the different needs of different genders, as well as those of people with disabilities and other marginalized groups during data collection.
Zurich Flood Resilience Alliance, 2019	Gender Transformative Early Warning Systems (EWS): Experiences from Nepal and Peru	Report: Intersectionality with reference to disability throughout report.	ReliefWeb	To explore the connection between gender diverse, including those with disability, and EWS, and best practices to ensure EWS are effective for all.	Challenges: The less economic, political, and cultural power women and gender minorities have before an event, the greater their suffering during and in the aftermath. DRR and EWS initiatives take place in locations where some groups have less power than others, where, in some cases, individuals or groups are deliberately marginalized. Recommendations: acknowledgement that gender is a critical consideration that requires gender analysis. A more ambitious EWS is gender transformative, aiming for an improvement over the status quo so that people of all genders can access, understand, and respond to effective early warning.
International Federation of Red Cross and Red Crescent Societies, 2018	Minimum standards for protection, gender and inclusion in emergencies	Guidance document: Intersectionality with reference to disability throughout report.	ReliefWeb	To present Red Cross and Red Crescent staff, members and volunteers with a set of minimum standards for protection, gender and inclusion (PGI) in emergencies. It aims to ensure that the emergency programming provides dignity, access, participation and safety for all people affected by disasters and crises.	Recommendations: conducting a gender and diversity analysis that must include the participation of women, girls, men, boys and persons of other gender identities as well as individuals and groups based on age (children, adolescents and older men and women); disability status (physical, sensory and intellectual); persons with mental health disabilities; and ethnic, religious or cultural minorities. Standards that include detailed actions are provided that aim to support dignity, access, participation, and safety.
CBM Global, 2022	Our Lesson An Approach to	Report:	Prevention Web	To help disability-inclusive DRR	Challenges: women with disabilities reported being

	Disability-Inclusive Disaster Risk Reduction - Based on Consultations with People with Disabilities in the Asia and Pacific Regions	Reference to intersectionality including gender & women throughout, section 4.2.1 in particular.		become a reality, the Pacific Disability Forum (PDF), the International Disability Alliance (IDA), and CBM Global's Inclusion Advisory Group, worked together to conduct inclusive consultations across Asia and the Pacific, to seek the perspectives, experiences and priorities of the diverse range of people with disabilities in relation to disaster preparedness, response and recovery.	especially at risk, uncovering that sexual harassment of young women and girls occurs in evacuation shelters. The study found that women and girls with disabilities experienced physical and sexual abuse when they sought to access hygiene facilities by themselves.
United Nations Women, 2020	Checklist for Gender Equality and Social Inclusion in Disaster/Emergency Preparedness in the COVID-19 Context	Resource/brief report: Reference to disability throughout report.	Prevention Web	The document presents emerging gender related issues in COVID-19 in Nepal and suggested actions to help prepare for an emergency.	Recommendation: Evacuation shelters are same for women and gender minorities with disability. A number of specific actions recommended supporting this.
World Bank, No date.	Designing Inclusive, Accessible Early Warning Systems (EWS): Good Practices and Entry Points	Report: Reference to disability, gender and women in particular throughout report.	Prevention Web	This paper provides entry points and good practices for designing more inclusive, accessible early warnings and is organized around the four key elements of effective end-to-end EWS.	Challenges: Gaps in Disaster Risk Knowledge e.g. <ul style="list-style-type: none"> • Lack of data & central standardized repositories, and limited data sharing/interoperability for disaggregated by sex, gender, disability status, age, and other characteristics relevant to vulnerable groups • lack of integration of inclusion considerations into disaster risk assessments • Insufficient use of community-based participatory risk-reduction approaches, including co-production of disaster risk knowledge.

					<p>Recommendations: Actions to Systematically collect disaggregated data on marginalized and vulnerable groups, identify or establish central standardized repositories and ensure interoperability between disaster risk information systems and social protection databases (e.g., by developing, adopting, and implementing a data governance framework with a set of principles, procedures, and responsibilities for data management). Encourage inclusive DRR actions.</p>
--	--	--	--	--	---

Table 1: Summary of sources and key findings

Discussion

This review explored the literature for what is known about the intersection of gender, sexual identity and disability in disaster, the challenges experienced and recommendations to support these groups. The review yielded a limited number of empirical studies and grey literature that were relevant to this review as many lacked a specific intersectional focus. Some empirical studies were conducted in low-income countries and were kept as resource literature.

The United Nations (UN, 2018) acknowledges that people with disability are more vulnerable to violence, exploitation, physical, sexual and emotional abuse following disasters, particularly if they are women, children, older persons with disability, and refugees with disability.

Furthermore, in the COVID-19 context, the UN (2020) identified that women with disability are at much higher risk of, and disproportionately affected by domestic violence during lockdown measures. As identified in previous literature (Mowat, 2015; World Bank, 2018), people with disability with multiple vulnerabilities such as gender identity, sexual orientation, ethnicity, race, age, among other factors experience more immediate and longer-term impacts of the pandemic than the larger population (UN, 2020).

Of the research findings reported, negative outcomes for participants were overwhelmingly noted, such as reduced social support, communications and services during COVID-19 lockdowns resulting in exacerbations of emotional changes, self-harm and problematic/aggressive behaviours (Gul & Yagmur, 2022; Hannawi, 2022; Jordan et al, 2022). All five studies reported participants having higher levels of fear of infection for themselves and their families, anxiety, insomnia, difficulty transitioning to, and coping with stay-at-home orders in relation to COVID-19 confinement. For LGBTQ+ people, there was an exacerbation of pre-existing risk factors such as unemployment, poverty, less mobility and access to health care, and less opportunity for agency and control over their own lives. Furthermore, there was increasing fear of discrimination during the pandemic due to reports of bullying during this period, and a general lack of awareness relating to disability within the LGBTQ+ community (Platero et al., 2023). For those of this group living in intensive cohabitation with family members, there was increased control with some participants having to be careful with how they interacted online within this environment due to privacy concerns and discrimination from family members regarding their sexual identity. The intersection of disability, gender and sexuality resulted in family members treating the adult person with disability as a child, limiting their ability to explore their sexualities and gender identities. They felt that they were treated differently to other LGBTQ+ people due to their disability: “...*there is an intersectional discrimination*” (Platero et al., 2023, p.113).

Challenges identified before, during and after disaster

The most reported challenge in the peer-reviewed literature related to *reduced social support* for people with disability from family, friends and neighbours due to COVID-19 related confinement, and a lack of access to social and other activities. Furthermore, difficulties with communication were reported, for example, mask wearing negatively impacted the ability to communicate clearly, and poor internet connectivity or reluctance to use videoconferencing

platforms limited online connectedness (Gul & Yagmur, 2022; Hannawi et al., 2022; Jordan et al, 2022; Moloney et al., 2022). Hannawi et al. (2022) found that boys with Autism Spectrum Disorder (ASD) found more difficulty sitting for extended periods to focus on online classes, and this also affected the ability to maintain social connectedness via this means. Similarly, Jordan et al. (2022) found that girls with Fragile X Syndrome were frustrated with the transition to online learning and a lack of structure. Furthermore, Jordan et al. (2022) reported that anxious and highly communicative mothers inadvertently transferred their pandemic related worries to their daughters. This study only referred to parents, and mothers in particular, and research regarding the interactions with fathers in this context would be helpful. Restricted social interactions also created more barriers to what existed pre-pandemic in relation to the sexual rights of LGBTQ+ people (Platero et al. 2022).

Another challenge related to *reduced access to transport, community-based supports and services, and health services/therapies* such as speech and language therapy and occupational therapy during the pandemic restrictions (Hannawi et al., 2022; Jordan et al, 2022; Moloney et al., 2022). Gul & Yagmur, (2022) reported barriers for women with disabilities being able to access reproductive and sexual health services, along with health providers ignoring or demonstrating insensitivity to them while seeking reproductive health interventions. Participants interpreted their needs as minor within the context of the ‘larger’ pandemic problem: “...during the pandemic process, the COVID concern took precedence over everything. I tried to live my pain at home, I don't care even if it's sick. COVID is so bad” (18 years old, orthopedic disability) (Gul & Yagmur, 2022, p. 1244). Participants also reported that they ignored their own reproductive health symptoms due to difficulty with mobility and accessing transport and health care, particularly if residing at distance from service providers: “If there was a problem before, I could go to the hospital thanks to my neighbour. But I didn't

want her to take me to my obstetrics during the pandemic. That would be very shameful and selfish.” (25 years old, visually impaired). (Gul & Yagmur, 2022, p.1246).

Access to services is also a problem in other disasters that result in internally displaced populations, or people being forced to leave their countries. Women with disability remain responsible for caregiving roles but experience numerous and intersecting forms of discrimination and stigma that is compounded by racial discrimination and xenophobia. These can limit access to community support services and increase risk of violence (UN, 2018; World Bank, 2018), reflecting other findings (Gartrell et al., 2020; Dominey-Howes, et al., 2016).

According to the World Bank (n.d.), gaps in disaster risk knowledge include a lack of data of vulnerable groups that is disaggregated by factors such as sex, gender, disability status and age. There is also insufficient inclusion of these factors in disaster risk assessments, insufficient use of community-based co-production approaches to disaster risk reduction, with limited understanding of the specific needs of vulnerable groups who have unequal access to accessible formats for people with disability to disaster risk knowledge (World Bank, n.d.).

Enablers and recommendations

Four of the peer-reviewed studies reported enablers and recommendations that can help in times of disaster to support people with disability who identify as gender diverse. *Technology* was the most prominent enabler for providing social support during the pandemic. Platero et al. (2023) reported on an online support programme (Diversxs) that helped participants to cope with feelings of isolation, anxiety, insomnia and stress. In addition to offering them training and access to adapted information, the programme helped participants to explore their sexuality and gender identity. The development of coping strategies to overcome anxiety included avoidance of watching too many news stories about the pandemic, and to use the increased free time during the lockdown to reflect on their identities and to try and connect to like-minded

people online (Platero et al., 2023). Jordan et al. (2022) recommended that enablers such as technology be used to develop new skills to maintain possible peer connections using communication via text message and phone calls, creating virtual social opportunities during stay-at-home orders. “...in nearly all arenas, technology consumption has allowed her to stay connected and express herself much more clearly than she tends to do orally” (Jordan et al., 2022, p. 32). Moroney et al. (2022) found that sharing of graphics, videos and photographs to provoke discussion or illustrate a point was easier online than with face-to-face support groups, and that technology enabled the participation of men with disabilities who lived in isolated circumstances to be involved in virtual gatherings. Moroney et al. (2022) recommended carer consultation and referral for a sensory and speech and language assessment for men who had sensory and ASD related difficulties, and who found difficulty interacting with other people via online forums.

Other recommendations included building coping skills using a consistent routine to minimize pandemic worries, and that independence in daily activities be encouraged to minimize the emotional impact (Jordan et al., 2022). Gul & Yagmur (2022) recommended that health professionals take a role in the development of policies and efforts that are inclusive of people with diverse gender and sexualities to ensure that pre-disaster vulnerabilities are not exacerbated and that there is continuity of, and access to health services for people with disability during and after the disaster.

The grey literature focused on both COVID-19 and disasters more generally. The UN (2020) policy brief focused on COVID-19 and recommended that *inclusion of people with disability* should be adopted as mainstream in all COVID-19 response and recovery, including the development of accessible information, services and programmes that are borne out of meaningful *consultation and active participation* by people with disability. Furthermore, strengthening of *awareness raising and capacity building* of services and community with

particular focus on women and girls at risk of gender-based violence was noted. These strategies reflect the DIDRR work of Villeneuve (2022) which emphasises a person-centred and capability-focused approach to disaster risk reduction.

Similar recommendations are noted in policy and resource documents by the UN (2018), World Bank Group (2018), World Bank Group (n.d.), International Federation of Red Cross and Red Crescent Societies (2018), Zurich Flood Resilience Alliance (2019, 2022), CBM Global (2022) and UN Women (2020), which focus on disasters more broadly, and were quite general in nature. The inclusion of disability in some of the documents was, on occasions, harder to identify, and was part of a broader discussion that included other minority groups. *Inclusion and active participation* of women and children with disability, older persons, diverse sexualities and genders, migrants and refugees and other minorities in decision making processes, DRR activities, and ensuring early warning systems and emergency information are in *accessible formats* were common themes across all documents. *Awareness raising*, particularly of minority groups at risk of violence and exploitation, and *capacity building* of support/aid workers was also a regular theme. The UN (2018) report aimed to achieve gender equality and empower women and girls with disability, however there were no specific information regarding the intersection of this topic and disasters presented.

Another recommendation included gender and diversity analysis and the development of a *register/data collection system* on people with disability, with specific focus on gender and cross-disability perspectives (Red Cross, 2018; UN 2018; World Bank Group, n.d.; Zurich, 2018). The issue of holding such data in a register of vulnerable people raises questions of privacy, who maintains the register, consent from vulnerable people who may not want to be on the register, and those who may not consider themselves as vulnerable (Victorian State Government, 2017). According to Garlick (2015), what such registers actually provide are small lists of older, often socially isolated adults with generic planning materials provided by

support/health workers rather than the intended lists of vulnerable residents who need tailored emergency evacuation advice. The World Bank Group (2018) also recommended other ways to assess community risk, vulnerability and capacity, for example, community mapping that includes existing information to identify people with disability and includes gender and disability perspectives.

In addition to the recommendations outlined above, International Federation of Red Cross and Red Crescent Societies (2018) and UN Women (2020) guidelines had more specific disability inclusive recommendations that related to women and children, older people and people with diverse sexualities and genders. These recommendations considered safety from violence and exploitation. Generally, the standards are quite descriptive, and specific guidance is not provided on how to enact the recommendations. Key points include:

- Consideration of accessibility to evacuation centres that are safe for all gender identities, ages, disabilities and backgrounds, for example, a safe location, adequate lighting on paths and latrine facilities, separate latrine and bathing facilities with locks on doors, partitions for privacy for those who are lactating, menstruating or require personal assistance.
- Advocate for proportional representation and equal involvement of women, people with disabilities and marginalised groups in decision-making and DRR activities.
- Working with community, men and boys to develop specific actions to reduce the risk of sexual and gender-based violence (SGBV) and violence against children.
- Involvement of staff and volunteers in DRR activities to receive training on disability inclusion, gender and diversity, SGBV, child protection, and trafficking in human beings with recognition of specific health needs of women and marginalised groups.
- Care and referral pathways identified for people (including with disability) who are victims of SGBV and human trafficking.

There are a number of limitations with this review. While a systematic approach was taken and three of the authors reviewed and screened the literature against the inclusion and exclusion criteria, there may be some studies or reports that were missed. All the empirical studies focused on COVID-19 therefore generalisations to other disasters cannot be made. While the grey literature was not specific to OECD countries, the majority of the recommendations are general in nature. The more specific recommendations are synthesised to major points as many were of a similar nature. As scoping reviews provide an overview of the literature, evaluation of the included studies was not made. The scarcity of resources meant we had limited literature from which to draw conclusions, however there were common cross-cutting themes identified.

Conclusion

This scoping review has provided an overview of empirical studies and grey literature that explored the intersection of gender, sexual identity and disability in disaster. The peer-reviewed literature focused on the COVID-19 pandemic with specific participant groups and research contexts. Recommendations focused on the use of technology to support social connectedness and build coping skills, and focussed on specific genders. Other issues were also identified and similar to those reported in the literature regarding women, gender, and sexually diverse people with disability having difficulty accessing health and support services, and experiencing intersecting forms of discrimination and stigma. The grey literature had a broader focus on natural hazard disasters, with women, gender and sexually diverse people with disability also reporting reduced access to transport, community-based supports and services, and experiencing SGBV and exploitation. The strong themes identified in both peer-reviewed and grey literature centre on inclusive approaches to disaster preparedness, including meaningful consultation with people with disability, active participation by diverse minority groups, awareness raising of issues faced, and capacity building of support services. Building greater awareness of the specific needs of minority groups such as women, gender and sexually

diverse people into DIDRR will reduce the disproportionate impacts of disaster on these groups.

Conflict of Interest

The authors declare no potential conflicts of interest with respect to the research, authorship and/or publication of this article.

References

- CBM Global. 2022. "Our Lesson An Approach to Disability-Inclusive Disaster Risk Reduction - Based on Consultations with People with Disabilities in the Asia and Pacific Regions". CBM Global Disability Inclusion. Accessed June 20, 2022. [CBM-Inclusion-Advisory-Group-IAG-Our-Lessons-report-May-2022.pdf \(cbm-global.org\)](https://www.cbm-global.org/our-lessons-report-may-2022.pdf)
- Dominey-Howes, Dale, Gorman-Murray, Andrew & McKinnon, Scott. 2016. "Emergency management response and recovery plans in relation to sexual and gender minorities in NEW South Wales, Australia". *International Journal of Disaster Risk Reduction* 16:1–11.
- Erman, Alvina., De Vries Robbe, Sophie Anne., Thies, Stephen Fabian., Kabir, Kayenat., and Maruo, Mirai. (2021) *Gender Dimensions of Disaster Risk and Resilience*, World Bank, Washington, DC.
- Garlick, Don. 2015. "The vulnerable people in emergencies policy : hiding vulnerable people in plain sight". *The Australian Journal of Emergency Management*, 30(1): 31–34. <https://search.informit-org.ezproxy.library.sydney.edu.au/doi/10.3316/agispt.20150912>
- Garrity C, Gartlehner G, Kamel C, King VJ, Nussbaumer-Streit B, Stevens A, Hamel C, Affengruber L. 2020. "Cochrane Rapid Reviews. Interim Guidance". *Cochrane Rapid Reviews Methods Group*. Accessed 30 June, 2023. http://methods.cochrane.org/sites/methods.cochrane.org/rapidreviews/files/uploads/cochrane_rr_-_guidance-23mar2020-final.pdf
- Gartrell, Alexandra., Calgaro, Emma., Goddard, George. & Sairath, Ngin. 2020. "Disaster experiences of women with disabilities: Barriers and opportunities for disability inclusive disaster risk reduction in Cambodia". *Global Environmental Change* 64: 102134. <https://doi.org/10.1016/j.gloenvcha.2020.102134>
- Gul, Sidar & Yagmur, Yurdagul. 2022. "The access of women with disabilities to Reproductive Health Services during the COVID-19 pandemic: A qualitative study. *International Journal of Caring Sciences* 15(2): 1242-1249.
- Hannawi, Andrew P., Knight, Caitlin, Grelotti, David J., Trauner, Doris, A. 2022. "Impact of COVID-19 pandemic-associated social changes on boys with moderate to severe autism". *Advances in Neurodevelopmental Disorders* 6: 206-210. <https://doi.org/10.1007/s41252-022-00257-7>

- Jordan, Tracey L., Bartholomay, Kristi L., Lee, Cindy H-Y., Miller, Jonas, G., Lightbody, Amy, A., & Reiss, Allan, L 2022. "COVID-19 Pandemic: Mental health in girls with and without Fragile X Syndrome". *Journal of Paediatric Psychology* 47(1): 25-36. doi: 10.1093/jpepsy/jsab106
- International Federation of Red Cross and Red Crescent Societies. 2018. "Minimum standards for protection, gender and inclusion in emergencies". International Federation of Red Cross. [Minimum-standards-for-protection-gender-and-inclusion-in-emergencies-LR.pdf \(ifrc.org\)](#)
- Kolakowsky-Hayner, Stephanie & Goldin, Y. 2020. "Sex and Gender Issues for Individuals With Acquired Brain Injury during COVID-19: A commentary". *Archives of Physical Medicine and Rehabilitation* 101: 2253-2255.
- Kelman, Ilan., & Stough, Laura. (2015). *Disability and Disaster: Explorations and Exchanges*. Palgrave Macmillan US. <https://doi.org/10.1057/9781137486004>
- Le Masson, Virginie. (2016). "Gender and Resilience: From Theory to Practice". *BRACED Knowledge Manager*. <https://odi.org/en/publications/gender-and-resilience-from-theory-to-practice/>
- Levac, Joëlle., Toal-Sullivan, Darene., & O`Sullivan, Tracey. L. (2012). "Household Emergency Preparedness: A Literature Review". *Journal of community health*, 37(3), 725-733. <https://doi.org/10.1007/s10900-011-9488-x>
- Molony, Paul, Dobel-Ober, David, Millichap, S. 2022. "Sounds and vision: Reflections on running a community-based group for men with learning disabilities online, during the pandemic. *British Journal of Learning Disabilities* 50:341-349. DOI: 10.1111/bld.12400
- Mowat, Joan G. (2015). "Towards a new conceptualisation of marginalisation". *European Educational Research Journal* 14(5): 454–76.
- Platero, R Lucas & López-Sáez, Miguel Ángel. 2023. "Community responses to LGBT+ adults with intellectual and developmental disabilities during the COVID-19 confinement in Madrid." *International social work* 66(1):107–116. <https://doi.org/10.1177/00208728211044741>
- PRISMA. 2023. "PRISMA for scoping reviews". PRISMA Transparent Reporting of Systematic Reviews and Meta-Analyses. Accessed 18 June, 2023. <http://www.prisma-statement.org/Extensions/ScopingReviews>
- United Nations. 2018. "Realization of the sustainable development goals by, for and with persons with disability: UN Flagship Report on Disability and Development". United Nations: Dept of economic and social affairs. Accessed June 20, 2023. [UN-Flagship-Report-on-Disability-and-Development-2018.pdf \(didrrn.net\)](#)
- United Nations. 2020. "Policy Brief: A Disability-Inclusive Response to COVID-19". United Nation. Accessed June 20, 2023. [sg_policy_brief_on_persons_with_disabilities_final.pdf \(didrrn.net\)](#)
- United Nations Women. 2020. "Checklist for Gender Equality and Social Inclusion in Disaster/Emergency Preparedness in the COVID-19 Context". Accessed June 19, 2023.

[Checklist for gender equality and social inclusion in disaster/emergency preparedness in the COVID-19 context | PreventionWeb](#)

- Victorian State Government. 2017. "Review of the 'Vulnerable people in emergencies' Policy: Discussion paper". Accessed 3 July, 2023. [VPE-Discussion-Paper.pdf \(daru.org.au\)](#)
- Villeneuve, Michelle, Dominey-Howes, Dale, Llewellyn, Gynnyth. 2017. "Local Emergency Management Guidelines for Disability Inclusive Disaster Risk Reduction in NSW". Accessed June 25, 2023. http://sydney.edu.au/healthsciences/cdrp/projects/Emergency%20Preparedness_brochure_August2017_WEB_ACCESS.pdf
- Villeneuve, Michelle, 2018. "Emergency preparedness pathways to disability inclusive disaster risk reduction", *Australian Journal of Emergency Management*. Monograph No. 3:44 – 46.
- Villeneuve, Michelle. 2021. "Building a roadmap for inclusive disaster risk reduction in Australian communities". *Progress in Disaster Science*. 10:100166. <https://doi.org/10.1016/j.pdisas.2021.100166>
- Villeneuve, Michelle. 2022. "Disability inclusive emergency planning: Person-centred emergency preparedness". *Oxford Research Encyclopedia of Global Public Health*. <https://doi.org/10.1093/acrefore/9780190632366.013.343>
- World Bank Group. 2018. "Five Actions for Disability-Inclusive Disaster Risk Management". Washington, DC: U.S.A. World Bank, GFDRR. Accessed June 19, 2023. [GFDRR-World-Bank_5-Actions-for-DiDRM.pdf \(didrm.net\)](#)
- World Bank Group. n.d.. "Designing Inclusive, Accessible Early Warning Systems: Good Practices and Entry Points". World Bank, GFDRR. Accessed June 19, 2023. [World Bank Document](#)
- World Health Organization & The World Bank. 2011. *World Report on Disability*. Geneva: Switzerland, World Health Organization.
- Zurich Flood Resilience Alliance. 2022. "Inclusion and disaster resilience Insights for gender and disability inclusive disaster-resilience building". Flood Resilience Alliance. Accessed June 20, 2023. [FRMC Tip Sheet Draft \(iiasa.ac.at\)](#)